



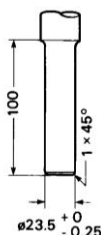
CLARK MASTS™

RTS56-4C MAST Cat. No. 230610

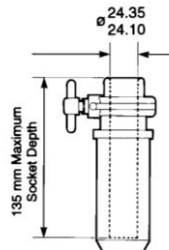
Specifications and Dimensions:

Extended Height	5.60 metres
Retracted Height (A)	1840 mm
Dimension (B) / (C)	262mm / 1578mm
Top Tube Diameter	1.5" (38.1mm)
Base Tube Diameter (D)	3.0" (76.2mm)
Number of Sections	4
Number of Guy Collars	1
Max. Headload at 25 psi:	15kg
Clamp Collars fitted to tube sections: Yes	
Turnable or Non-Turnable base fitted: Non-Turn.	
Wind speed ratings assume the mast is rigidly mounted, pressurised to 25 psi, and the side area of the headload does not exceed 1000 sq.cm.	
Max. safe wind speed unguyed: 80km/h	
Max. safe wind speed with top guys: 140km/h	

Recommended
Antenna Spigot
Size:



Antenna Socket
Size: 24mm



Materials:

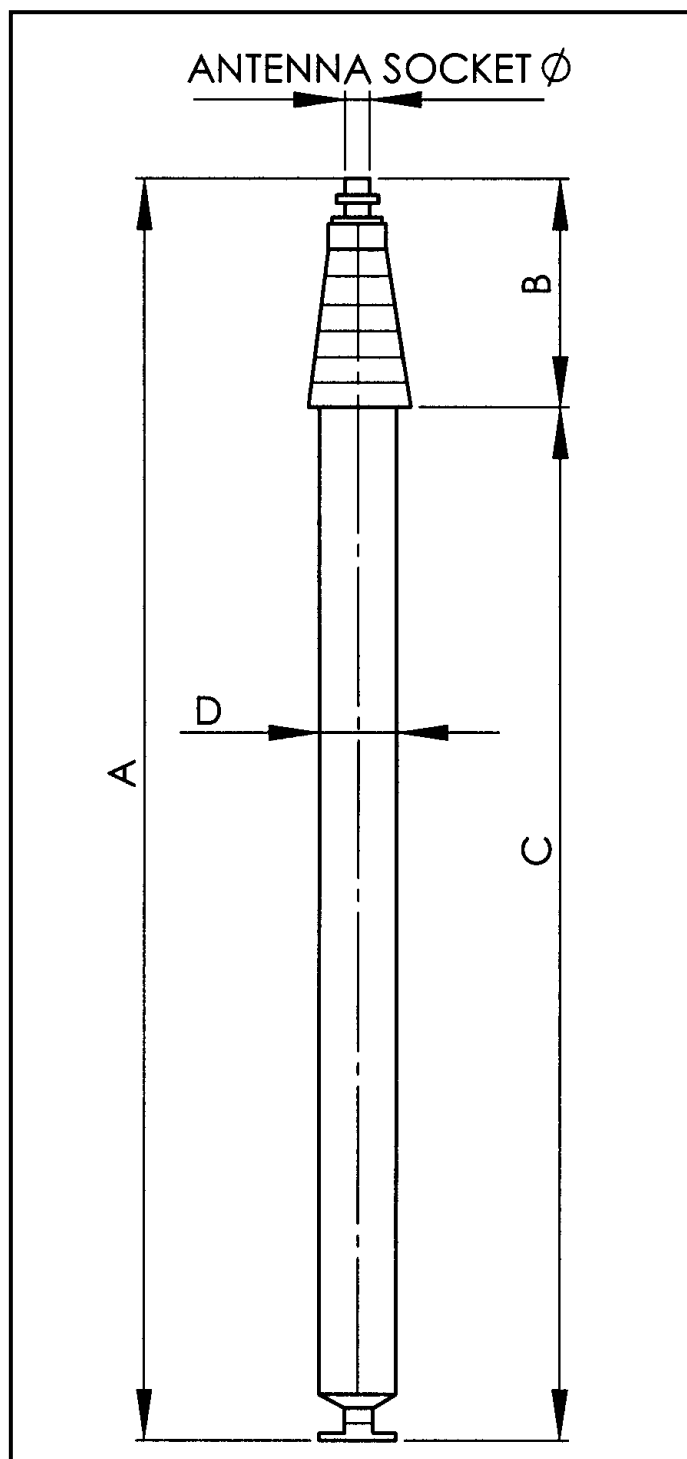
Mast Sections: Heat treated aluminium alloy 6082T6
Castings: Die cast aluminium alloy LM6

Finishes:

Paint Colour: Safety Yellow Gloss (984-2015G)
Mast sections: Clear anodised
Mast collars: Black anodised
Fittings: Zinc plated and passivated

Operating Temperatures: +55°C to -40°C (dry)

Max. Working Air Pressure: 1.7 bar (25 psi)



Clark Masts Systems Ltd &/or Clark Masts Asia Pacific Pty Ltd,
reserve the right to change any specifications or information given
in this leaflet without notice. E&OE.